

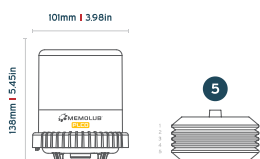


PLCD

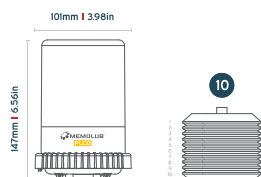
MEMOLUB PLCD SERIES KNOWLEDGE BASE

DIMENSIONS

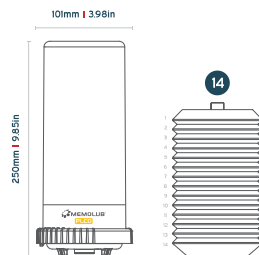
Standard
120cc | 4oz



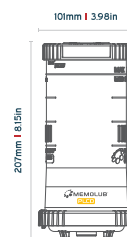
Mega
240cc | 8.1oz



Giga
480cc | 16.2oz

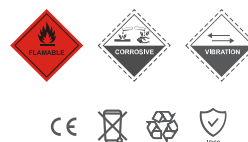


OIL R-500
500cc | 16.9oz



PRECAUTIONS

- Do not open the housing: loaded spring
- Hold MEMOLUB® down during manual checks
- Leq <70 dB
- Use MEMOLUB® only for greasing machinery
- Use only lubricant cartridges and batteries recommended by the manufacturer



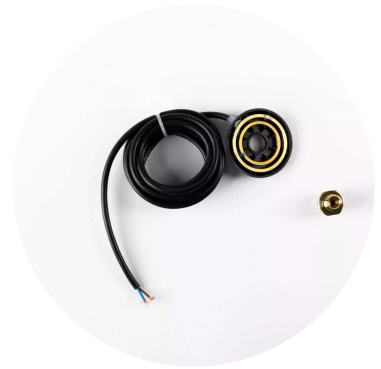
INSIDE THE BOX



MEMOLUB® PLCD Pump



MEMOLUB® Housing Kit



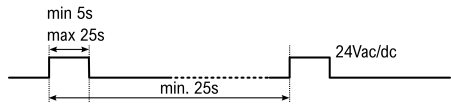
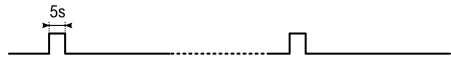

MEMOLUB® PLCD Memo Kit

SETTINGS & INSTALLATION

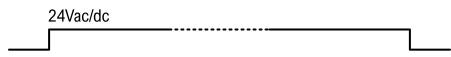
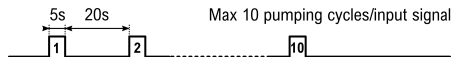
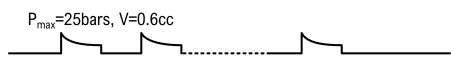
REMOTE INSTALLATION DISTANCES

TYPE OF INSTALLATION	MAXIMUM DISTANCE
Single point	10m
Multipoint with 2 outlets	6m
Multipoint with 4 outlets	6m

INTERMITTENT MODE

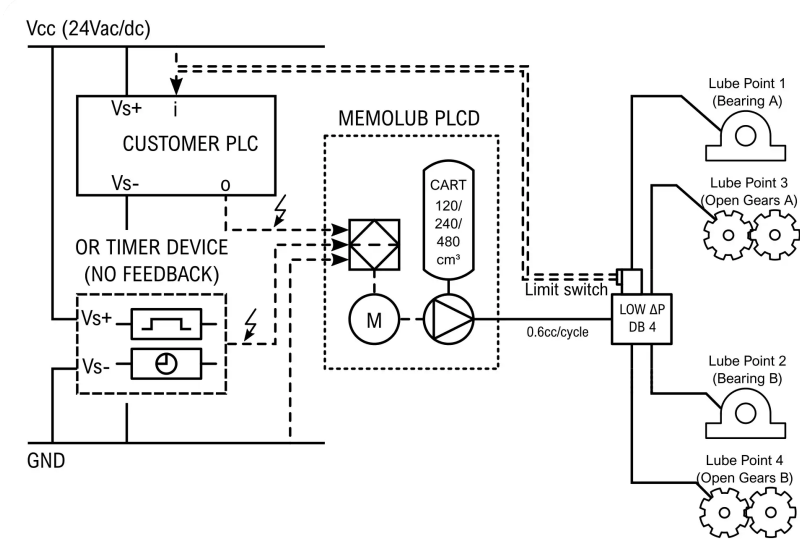
DESCRIPTION	SIGNAL
INPUT SIGNAL (FROM CUSTOMER PLC/TIMER)	
MOTOR DRIVE	
PUMP OUTLET (TO LUBRICATION)	

CONTINUOUS MODE

DESCRIPTION	SIGNAL
INPUT SIGNAL (FROM CUSTOMER PLC/TIMER)	
MOTOR DRIVE	
PUMP OUTLET (TO LUBRICATION)	

WIRING EXAMPLE

Here you have a wiring example with feedback from limit switch. For other examples please get in touch with your local distributor.



SPECIFICATIONS

ELECTRICAL SPECIFICATIONS

	MEMOLUB® PLCD	MEMOLUB® PLCD PLUS
Power Source	External Power Supply (min 15W - 0.6A)	
Voltage	24V DC	
Cable type	VTLB RD H03VV-F 2x0,75mm ² (200mm)	
Short circuit protection	Yes	
Stroke duration	5 seconds	
Minimum stroke interval	20 seconds*	

* This time is given for low viscosity oils only. We recommend a minimum time interval of 15 minutes for greases. Please contact your local distributor for detailed information.



OTHER SPECIFICATIONS

	MEMOLUB® PLCD	MEMOLUB® PLCD PLUS
Temperature exposure range	-15°C to 50°C*	
Connections	1/4 BSP	
Lubricants	Oil and Grease (up to NLGI #2 with an oil base between 100 and 460 cSt)**	
Maximum Stroke Pressure	25 bar / 350 PSI	

* Lubricant adapted for low temperatures.

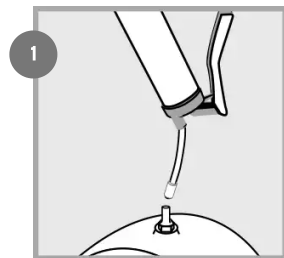
** For any other viscosity level please contact your local distributor.

STATUS LIGHTS

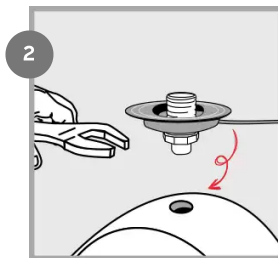
COLOR	MEMOLUB® PLCD	MEMOLUB® PLCD PLUS
	N/A	The pumping cycle ran successfully.
	N/A	The gearbox/motor is damaged or broken. Check the battery state.

INSTALLATION GUIDELINES

DIRECT INSTALLATION



Prime lube point and remove nipple.



Install PLCD Memo on lube point using threadlocker (BSP 1/4).

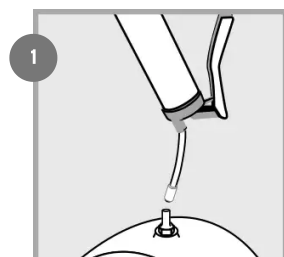


Install MEMOLUB® PLCD on Memo.

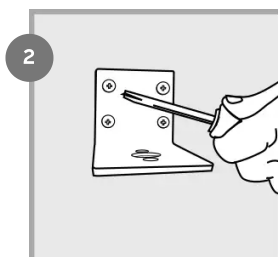


MEMOLUB® PLCD works immediately when triggered by PLC output.

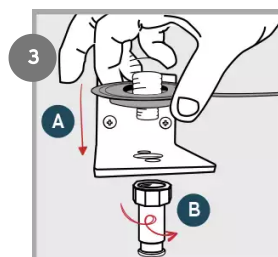
REMOTE INSTALLATION



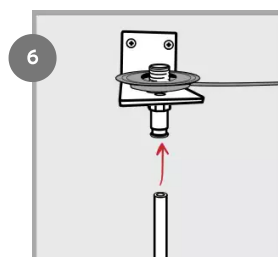
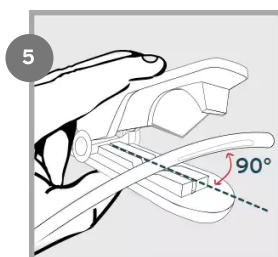
Prime lube point and remove nipple.



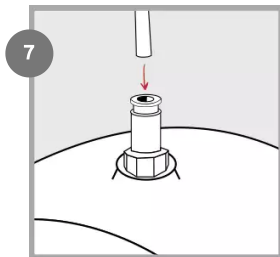
Secure the mounting bracket.



Install PLCD Memo and FI/4 fitting on bracket using a strong threadlock. Connect the MEMOLUB® PLCD cable to the PLC output.

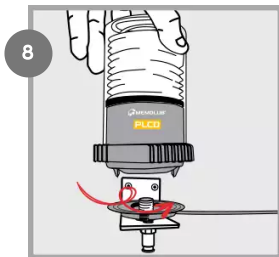


Screw BSP 1/8 fitting on lube point.



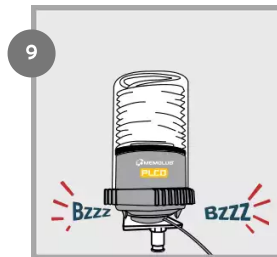
Insert hose into lube point's quick fitting.

Cut hose to required size.



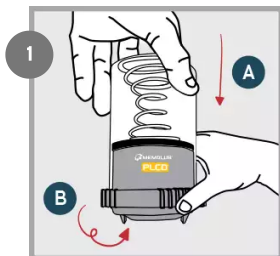
Install MEMOLUB® PLCD on PLCD Memo.

Insert hose into PLCD Memo's quick fitting.

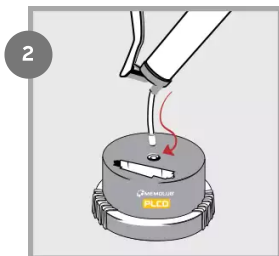


MEMOLUB® PLCD works immediately when triggered by PLC output.

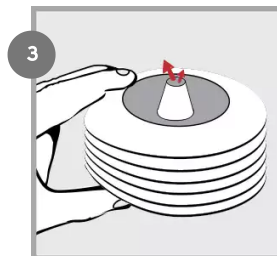
CARTRIDGE REPLACEMENT GUIDELINES



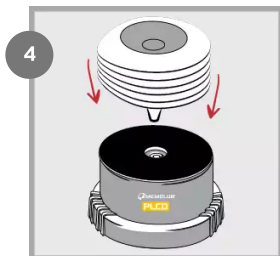
Open (fingers on ribs).



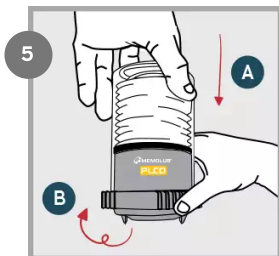
Prime the MEMOLUB® PLCD pump.



Squeeze the cartridge to evacuate air in the cartridge



Replace the cartridge on the MEMOLUB® PLCD pump. NOTE: the battery seal can be removed for 480cc cartridges.



Close and lock (fingers on ribs).

FAQ

How can I test and/or check if MEMOLUB® PLCD is functioning?

You can test and/or check whether MEMOLUB® PLCD is working correctly at anytime by powering it OFF and ON again from the PLC. MEMOLUB® PLCD will then expulse once.

This operation has to be done with a cartridge inside the MEMOLUB® PLCD.

What to do if my MEMOLUB® PLCD automatic lubricator is not functioning?

Make a manual test of MEMOLUB® PLCD by using a MEMO with the three rings in the ring-holder.

If MEMOLUB® PLCD does not work, check the following:

- Is the power supply ON?
- Does the power supply have the right amplitude (24V AC/DC) ?
- Is there any discontinuity in the wiring?
- Are there two brass rings inside the ring-holder? If not, no current can feed MEMOLUB® PLCD and this latter will not work. Make sure you insert them correctly as explained in the installation guidelines.

What to do when there is no lubricant coming out of my MEMOLUB® PLCD?

If MEMOLUB® PLCD does function, but no grease comes out of the automatic lubricator check the following:

- Is there a lubricant cartridge inside the MEMOLUB® PLCD? If not, recharge the unit with a cartridge as described in the installation guidelines.
- Was the spring mounted correctly inside the transparent housing? If not, please mount it again as described in the installation guidelines.
- Is the pump of the MEMOLUB® PLCD primed? If the cartridge of MEMOLUB® PLCD was totally emptied before replacement, some air could have been sucked into the system and the pump would cavitate for a certain number of cycles. Place a grease handgun on the suction valve of the red housing and pump grease through the unit as explained in the installation guidelines.

What to do when the lubricant cartridge is not emptied correctly?

If MEMOLUB® PLCD does function but the lubricant cartridge does not empty or not in the predicted timing there might be that of the following issues occurs:

- The piping is clogged: use a handgun to clear the pipes.
- One of the outlets of the distributor block has been voluntarily obstructed. Use bridging elements to reduce the number of outlets of a distributor block.
- The piping is damaged. Replace the piping.
- Counter pressure at the MEMOLUB® PLCD outlet is higher than 13 bar: please respect the tubing diameters, tubing lengths, the number of outlets per distribution block and the working temperatures. Also, use fittings with openings larger than 4mm (0.157").
- At working temperature, the base oil viscosity of the grease is higher than 10.000cSt. Please use low temperature lubricants.

What to do when the lubricant does not reach the lubrication point?

MEMOLUB® PLCD does function and empties correctly, however no lubricant is reaching the lubrication point. Possible causes are:






- The piping might be damaged, please check and replace if necessary.

- A fitting is not correctly screwed or sealing is missing, please check and replace or add if necessary.

Does MEMOLUB® PLCD needs specific maintenance?

MEMOLUB® does not require any specific maintenance. When used in humid or dusty atmospheres MEMOLUB® PLCD can be cleaned with compressed air or a slightly humid rag. To clean MEMOLUB® PLCD do not use solvents or plunge unit in any liquid. It is also possible to equip your MEMOLUB® PLCD with a [protection cover](#). For additional information, please contact your local MEMOLUB® dealer.

REGULATORY INFORMATION

SYMBOL	DESCRIPTION
	This product is compliant with Directives 2006/42/EC (Machinery). The relevant Declaration of Conformity is available here [https://memolub.eu/assets/uploads/Support/PLCD/DoC-CE-PLCD-2023.pdf].
	This product is compliant with UK regulations 2008 No. 1597 (Supply of Machinery). The relevant Declaration of Conformity is available here [https://memolub.eu/assets/uploads/Support/PLCD/DoC-UKCA-PLCD-2023_2023-06-02-142708_xpli.pdf].
	This product is compliant with customs union technical regulation TR CU 010/2011 (safety of machines and equipment). The relevant Declaration of Conformity is available here [https://memolub.eu/assets/uploads/Support/PLCD/DoC-EAC-PLCD-2023.pdf].
	The WEEE symbol is attached to the product in compliance with the EU directive 2012/19/EU on Waste Electrical and Electronic Equipment (WEEE). It is intended to deter the improper disposal of this product and to promote reuse and recycling.
	The packaging material can be recycled. Please arrange for the environmental appropriate disposal of the packaging.